

CHM Files

Introduction and troubleshooting

miControl®
Blankenfelder Chaussee 1
15831 Großbeeren (Diedersdorf)

Tel. +49 (3379) 31259-0
Fax +49 (3379) 31259-19

<http://www.miControl.de>
<mailto:mc@miControl.de>

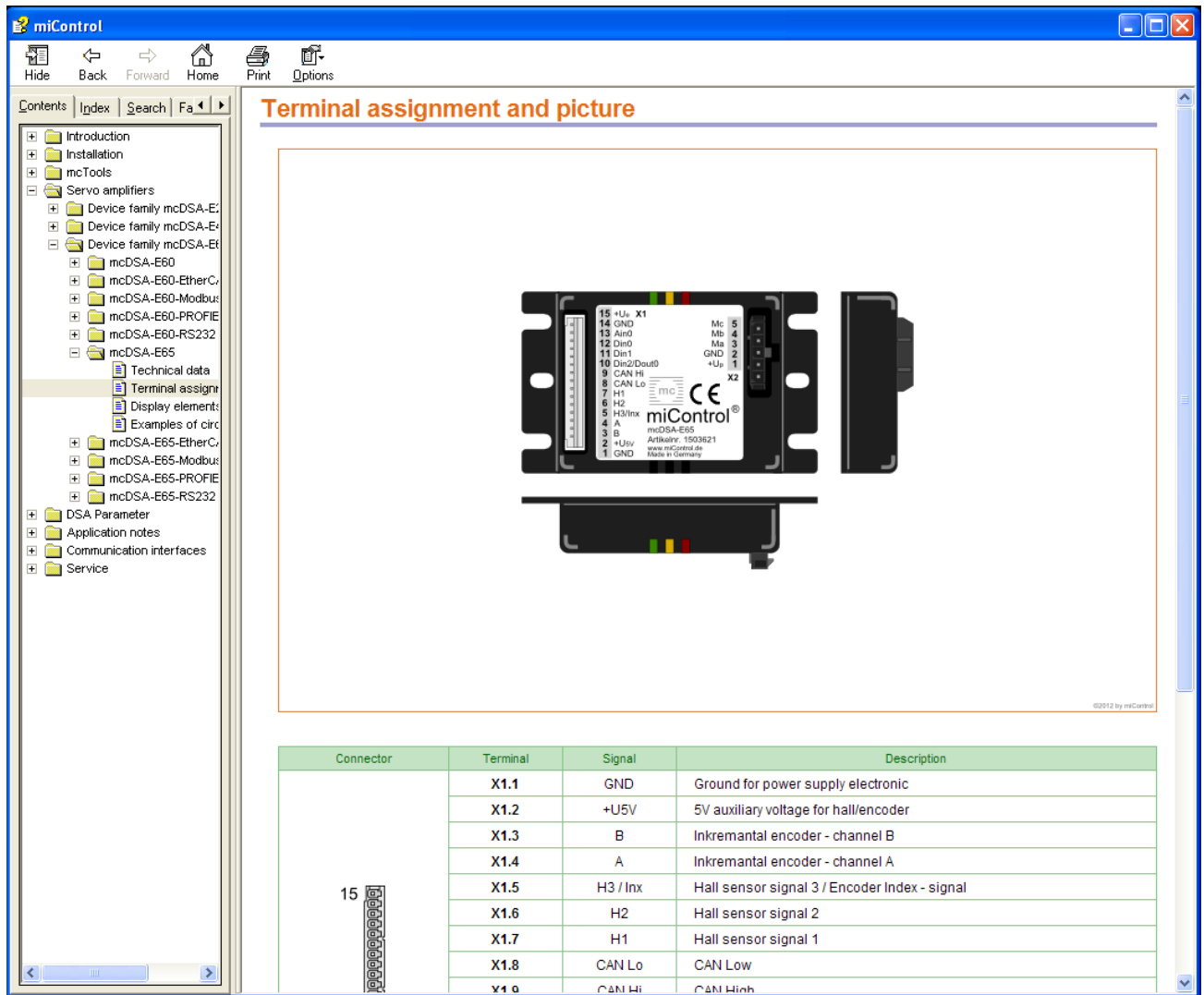
Table of contents

1 Introduction..... 3
2 Troubleshooting..... 4

1 Introduction

CHM (Compiled HTML Help) is a file format created by Microsoft that is used for help files under the Windows operating system. It has various advantages, such as a full-text search and a table of contents with a tree structure.

In the help file mcManual_en.chm of miControl all important technical data of the standard devices are collected.

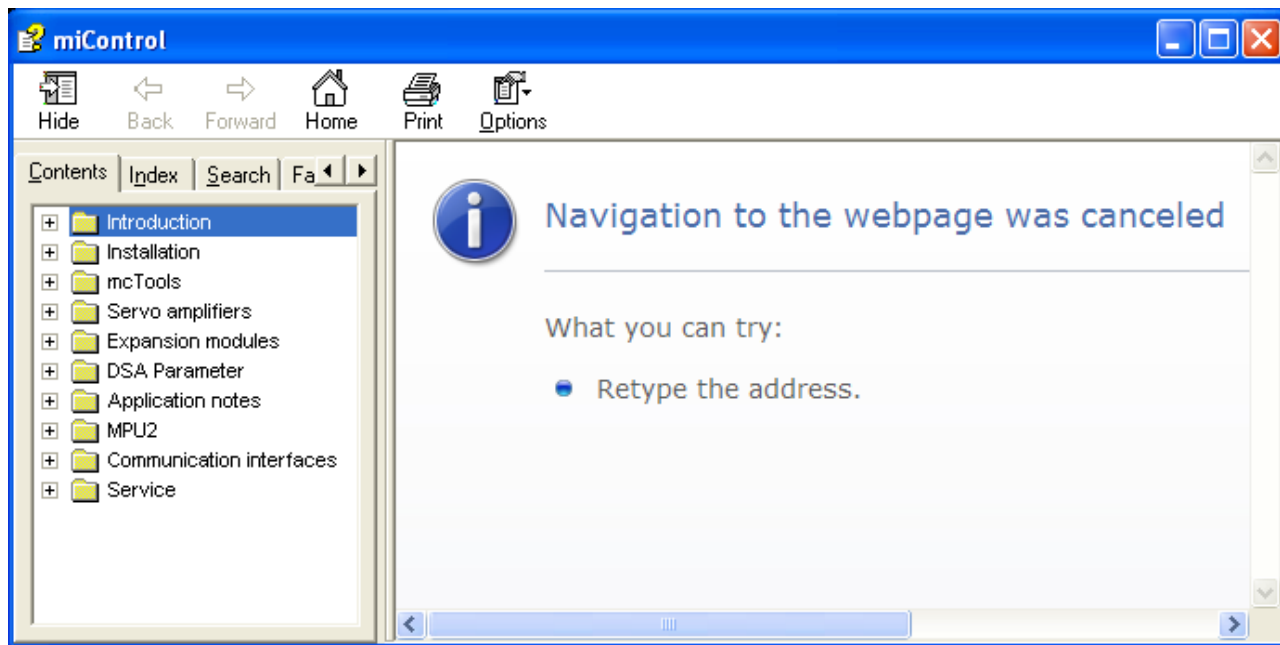


Terminal assignment and picture

Connector	Terminal	Signal	Description
15	X1.1	GND	Ground for power supply electronic
	X1.2	+U5V	5V auxiliary voltage for hall/encoder
	X1.3	B	Inkremental encoder - channel B
	X1.4	A	Inkremental encoder - channel A
	X1.5	H3 / Inx	Hall sensor signal 3 / Encoder Index - signal
	X1.6	H2	Hall sensor signal 2
	X1.7	H1	Hall sensor signal 1
	X1.8	CAN Lo	CAN Low
	X1.9	CAN Hi	CAN High
	X1.10	GND	Ground

2 Troubleshooting

Due to the security update 896358 of the Microsoft Corporation the behavior of *.chm files got restricted.



If you encounter the same problem as shown in the picture, please follow these steps:

1.

1.1. Store "mcManual_en.chm" on a local hard drive.

Attention:

Many companies have stored the "Desktop" and "My Documents" folder on network drives. The "mcManual_en.chm" must necessarily be stored on a local hard drive. (e.g. "C:\temp\mcManual_en.chm")

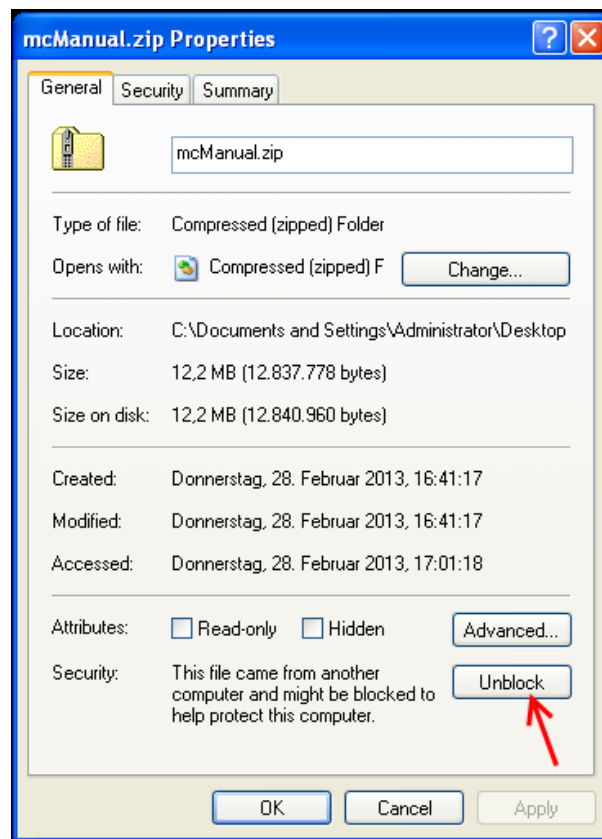
2.

2.1. If step 1 does not work, try downloading the file "mcManual_en.zip" from the [miControl website](http://www.miControl.de).

2.2. Store the file on a local hard drive.

2.3. Click with the right mouse button on the "mcManual_en.zip" file and then click "Properties".

2.4. Under the tab "General" click "Unblock" as shown in the picture below.



2.5. Now click "OK" and extract the "mcManual_en.zip" file on the local disk.

2.6. Now open the extracted "mcManual_en.chm" file.

Important notes

miControl reserves the right to change the present documentation, the software and products described herein that serve the purpose of technical progress without prior notice.

No part of this documentation may be reproduced, processed using electronic systems, copied, or transmitted to third parties in any form (photocopy, microfilm or other process) without prior written permission from miControl.

All information and technical data in this documentation have been gathered with the greatest possible care. miControl cannot be held responsible, however, for the correctness, completeness or relevance of the information and cannot assume any legal responsibility or liability which may arise from inaccurate or obsolete information.

Please note that the designations for software and hardware, trade names, and trademarks used in this documentation, are the property of those companies. All company names or product marks mentioned in this documentation are trade marks or registered trade marks of the individual companies and are subject in general to trade mark, brand name and patent law. Among others IBM, IBM PC and PS/2 are registered trademarks of IBM Corporation. MS-DOS, Windows, and Windows NT are registered trademarks of Microsoft Corporation.

In general, trademarks have not been marked in this documentation. The lack of such marking does not mean that a particular term, sound, or image is not a registered brand or a registered trademark.

Copyright © 1997-2013 by miControl®. All rights reserved.